



Bedrooms



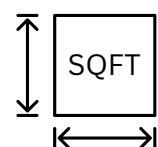
STUDIO

Bathrooms



1

Dimensions



2 options available
23' 7" x 14' 4"
27' 7" x 14' 4"

Roof

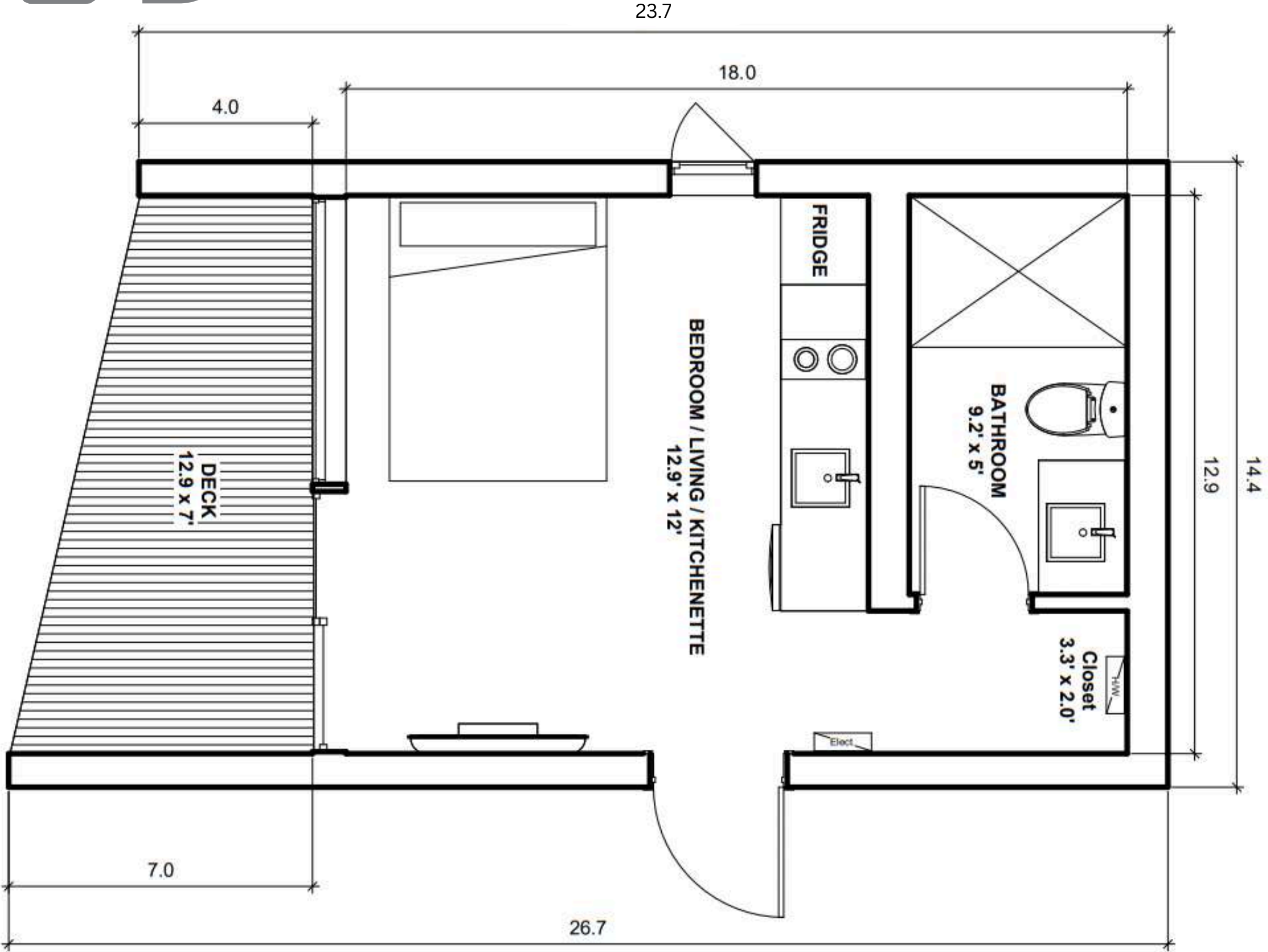


Single Pitch or
Gable roof

PRICE : \$132,000 / \$166,000

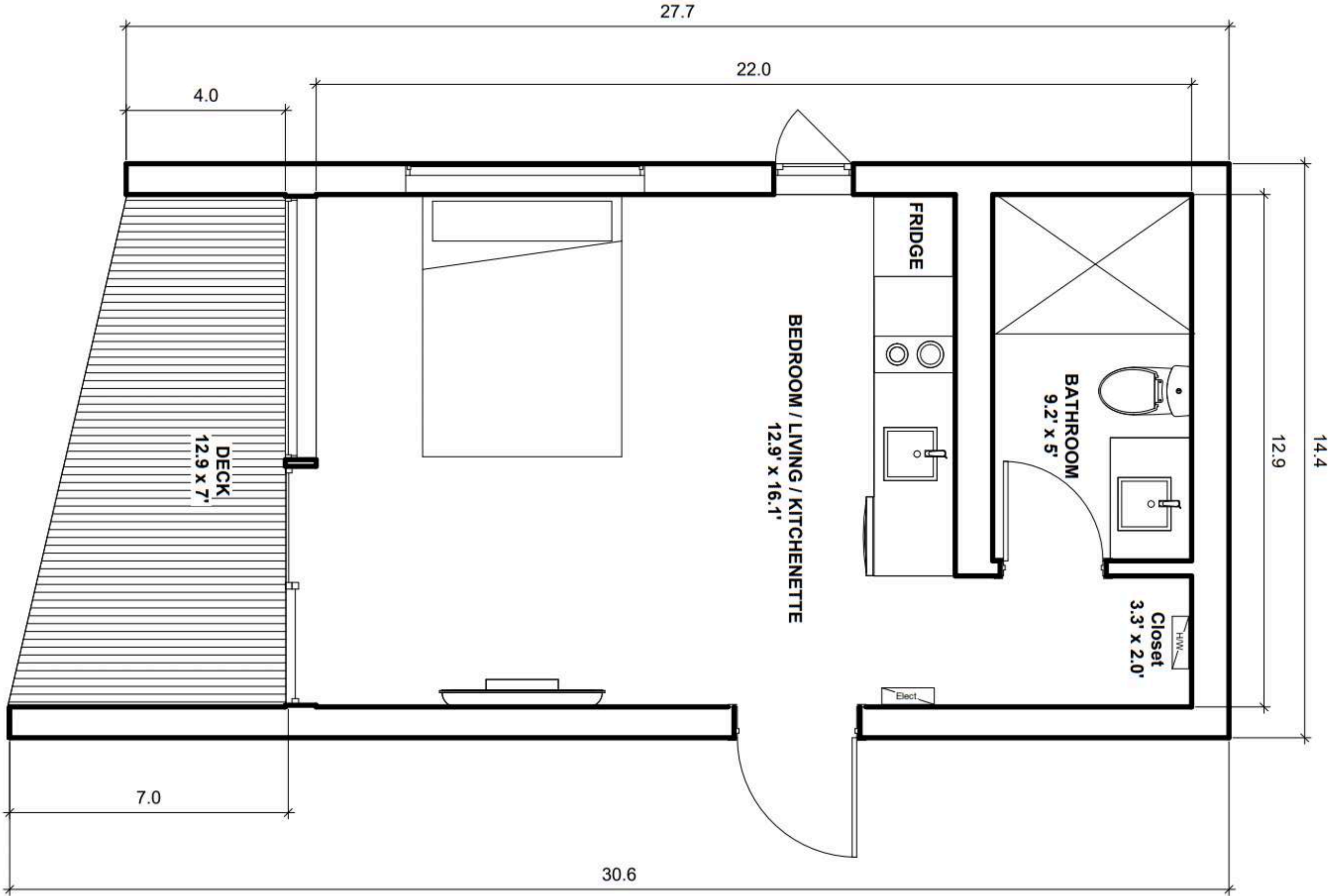


WHISKEY JACK - 341 SQFT





WHISKEY JACK - 398 SQFT



LIGHT GAUGE STEEL FRAME (G90 galvanized steel/50 KSI)			STANDARD	UPGRADE
Engineered Floor System			●	
LGS external walls 140mm stud profile			●	
LGS internal non-loadbearing walls 140 mm & 90mm stud (Plan Dependent)			●	
LGS roof panels back-to-back studs 140mm deep			●	
WALL & ROOF INSULATION				
R36 Walls – R16 4” EPS Rigid Board + Fibreglass Batts R20			●	
R37 Vaulted Roof with ice and watershield roof membrane			●	
FLOOR INSULATION				
R28 – Fibreglass batts			●	
FLOOR SYSTEM				
3/4" T&G Gold Edge OSB sub-floor			●	
EXTERIOR WALLS & SIDING ACCENTS				
24 Gauge Standing seam Metal (Iron Ore / Charcoal color options)			●	
Cedar 1 x 6 T&G with Sico Stain (Natural or Cedar)			●	
Lux West Coast Series Faux Wood (Hemlock or Heartwood)				●
ROOF SYSTEM				
1/2" fir plywood sheathing			●	
Peel n Stick Membrane			●	
24 Gauge Standing seam Metal (Iron Ore / Charcoal color options)			●	

WINDOWS & DOORS			STANDARD	UPGRADE
Low-E Argon windows & doors (Black exterior / white interior)			●	
Low-E Argon windows & doors (Black exterior / black interior)				●
UTILITIES				
200 amp electrical panel (100 amp if generator ready)			●	
Hot water tank 30 – 50 gallon (model dependent)			●	
Rheem on demand water heater (Gas Only)				●
Samsung Ductless mini-split system with heat pump			●	
Additional mini head in bedroom				●
Jotul GF 160 DV Gas fireplace				●
Gas connection for propane/natural gas (stove, fire, on demand & BBQ)				●
Central data point for internet, TV and phone			●	
ERV system			●	
LIGHTING				
Exterior contemporary wall lights (black)			●	
Interior 3.5" LED pot lights (black or white)			●	
Pendant kitchen lights (model dependent)			●	
Motion lights under bathroom vanity				●
Dimmable lighting switches (location dependent)				●

INTERIOR FINISHES	STANDARD	UPGRADE
Benjamin Moore White Dove OC-17	●	
White interior doors / Black exterior	●	
Interior door handles (Matte black or Stainless steel)	●	
Vinyl Plank Aquafix Grand Cru Series 9"	●	
Engineered hardwood flooring (exc. bathroom)		●
Lynden Oak Grove Doors		●
Closet - bypass doors with hanging rod	●	
Custom fitted closet		●

KITCHEN		
Cabinets (Super Matte or Timeless Grey / White / Tafisa Wood)	●	
Birch boxes with soft close doors	●	
Blanco Silgranit sink (Anthracite/Stainless Steel)	●	
2 cm Quartz Countertops (4 colour options)	●	
Delta Faucet with pull-down spray (Black / Stainless Steel)	●	
Hardware Handles (Black / Stainless Steel)	●	
Kitchen Island (model dependent)	●	
Tile backsplash		●
3cm Quartz countertops (Olympus White / Uliano Grey)		●

BATHROOM	STANDARD	UPGRADE
Cabinets (Super Matte or Timeless Grey / White / Tafisa Wood)	●	
Hytec 1 piece shower with curtain rod / 1 piece tub (model dependent)	●	
Slim shower base with half glass / 1 piece shower with glass door		●
Shower Surround Feature Tile or Fibro board		●
Delta Shower head with matching valve trim (Black / Stainless Steel)	●	
Rainfall Shower		●
24" x 48" Eureka Porcelain tile floor – Blanco / Grigio		●
Single Faucet (Black / Stainless Steel)	●	
Single sink	●	
Heated Towel Rack		●

APPLIANCE PACKAGE - UPGRADE		
Full suite of LG/Frigidaire appliances (Stove with hood fan, fridge/freezer, dishwasher, washer/drier, microwave)		●
Additional cost to install over the range microwave or in island		●